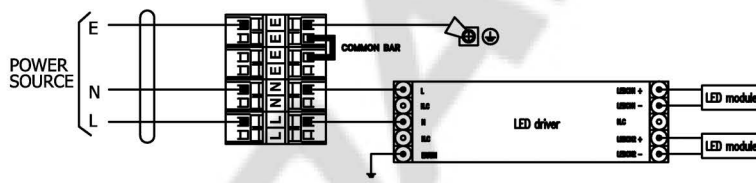
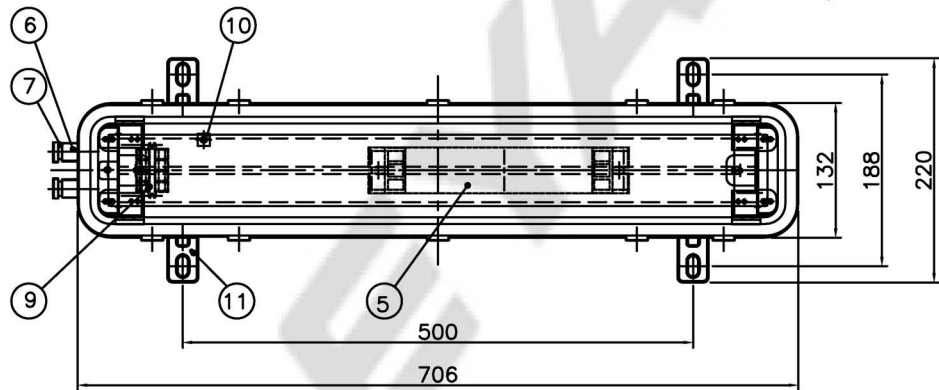
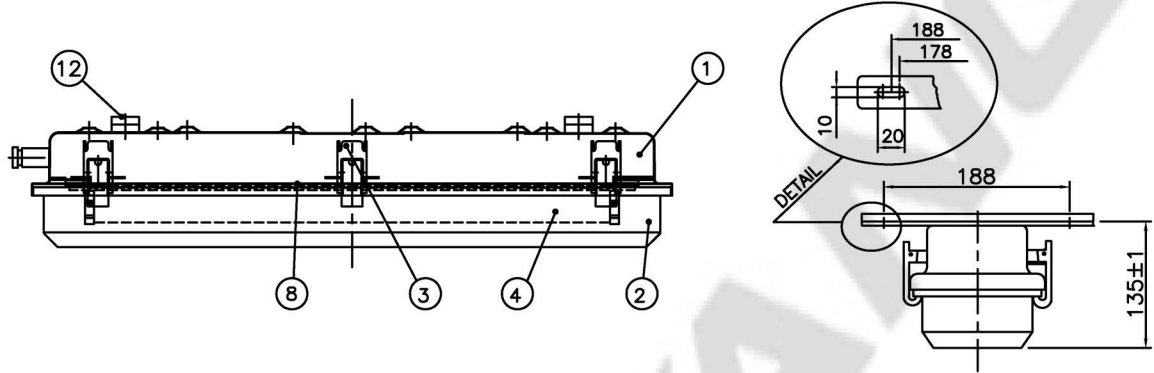
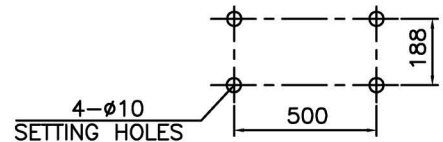


CAPACITY	SYMBOL/SERIAL NO.	CIRCUIT DIAGRAM
AC 100~250V, 50/60Hz		
12.5W x 2		



CIRCUIT DIAGRAM



SETTING DIMENSION

- NOTE -

\* AMBIENT TEMPERATURE : -40°C ~ +55°C

12	ANTI-VIBRATION PACKING	IIR	2		6	GLAND HUB(M24)	STAINLESS STEEL316L	2	
11	OUTSIDE EARTH BOLT	STAINLESS STEEL316	1	M5	5	LED driver	-	1	
10	INSIDE EARTH BOLT	STAINLESS STEEL304	1	M5	4	LED module	-	2	5,000±300K
9	TERMINAL BLOCK	-	1	CLAMPING 4P	3	LATCH	STAINLESS STEEL316L	6	
8	REFLECTOR	STEEL	1		2	GLOBE	POLYCAR-BONATE	1	
7	CABLE GLAND(M24)	BRASS	2	ø14~ø17.5	1	BODY	STAINLESS STEEL316L	1	
NO	NAME OF PART	MATERIAL	Q'TY	REMARK	NO	NAME OF PART	MATERIAL	Q'TY	REMARK

APPROVED	O. J. KWON	UNIT	MM	TITLE: LED CEILING LIGHT (-40°C LOW TEMP. TYPE) FOR MARINE USE					
CHECKED	J. W. PARK	SCALE	N/S						
DESIGN	H. S. SHIN	COLOR	N-9.3						
DATE	2020.07.16	IP	66/67						
				MODEL NO.	LEM125WS-550UWNM2(-40)-AV	WEIGHT	5.2 Kg		
				DWG NO.	LO1450223	SHEET NO.	-		